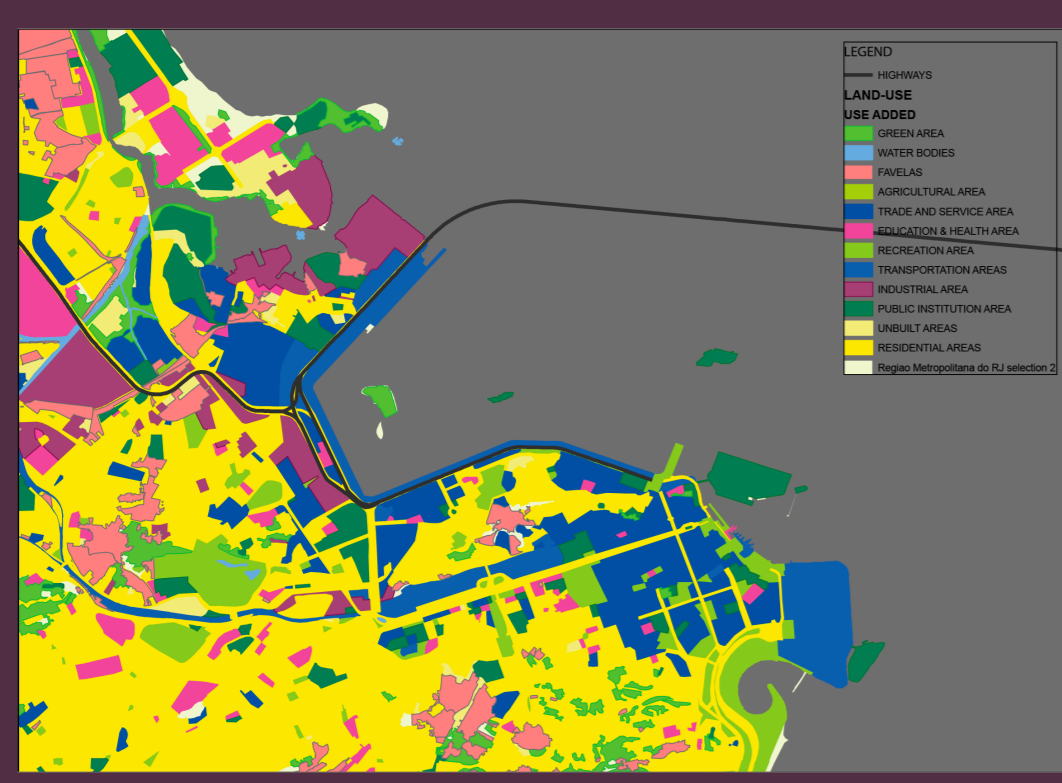


# WORKSHOP DE ESTRATÉGIAS PROJETAIS DE ZONAS PORTUÁRIAS DEGRADADAS NA BAÍA DE GUANABARA

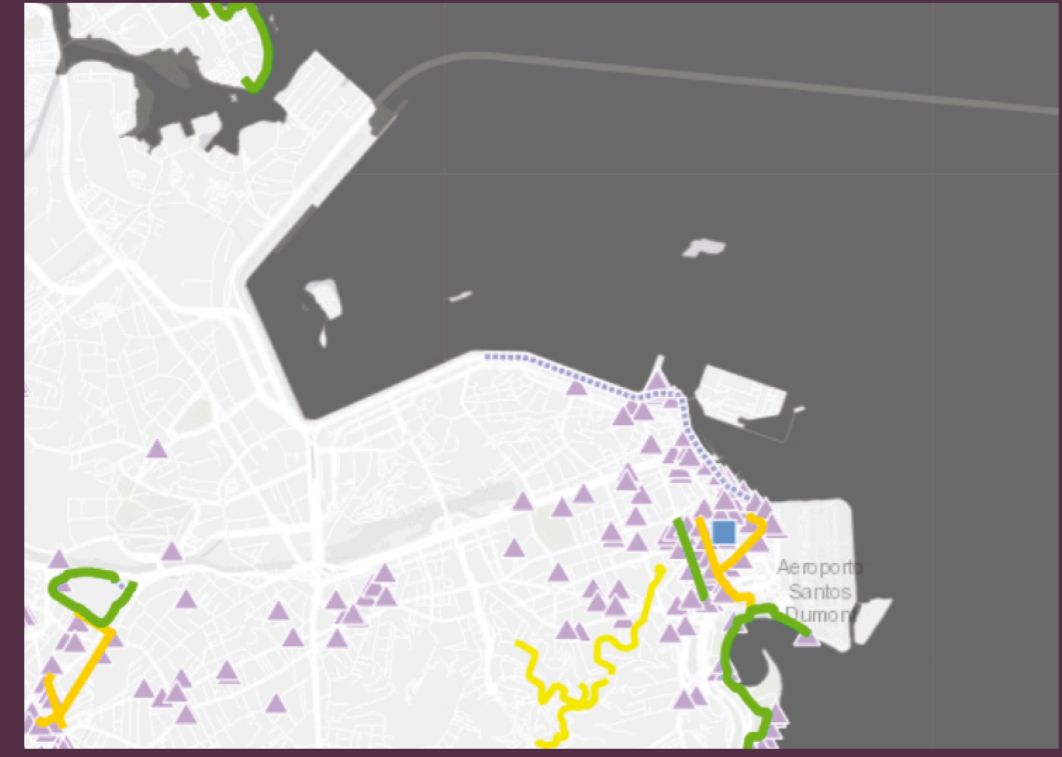
## ESTRATÉGIAS ECONÔMICAS + GOVERNAMENTAIS + SUSTENTÁVEIS + URBANAS

### INDICADORES

#ECONOMIC

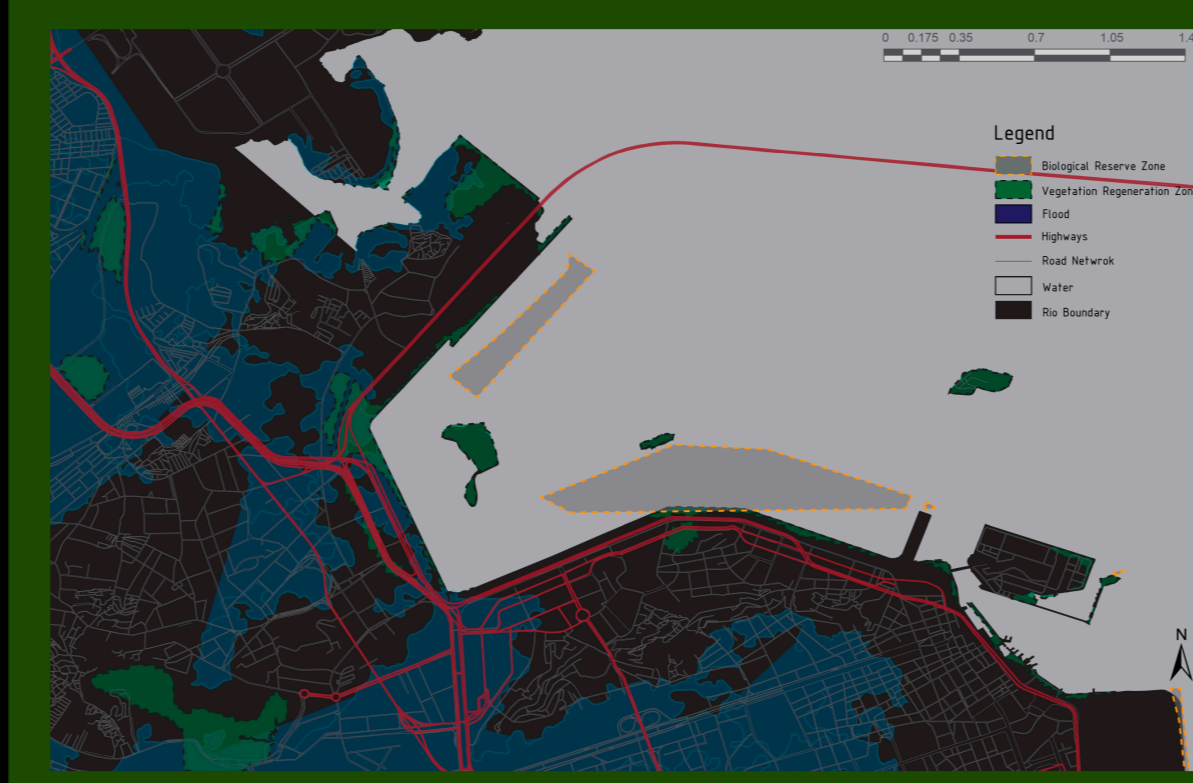


This map shows the different land use pattern along the Guanabara port of Rio de Janeiro.

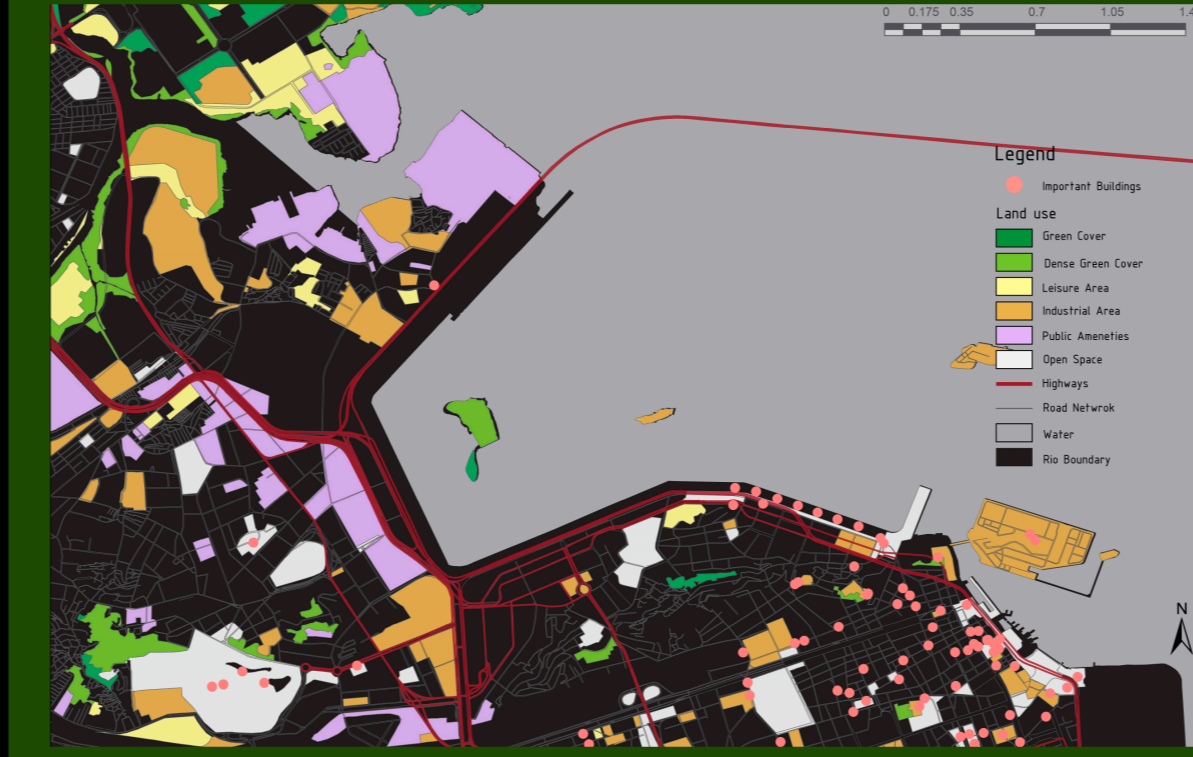


This map shows the different bicycle paths, bicycle racks and trams route along the Guanabara port of Rio de Janeiro.

#SUSTAINABLE

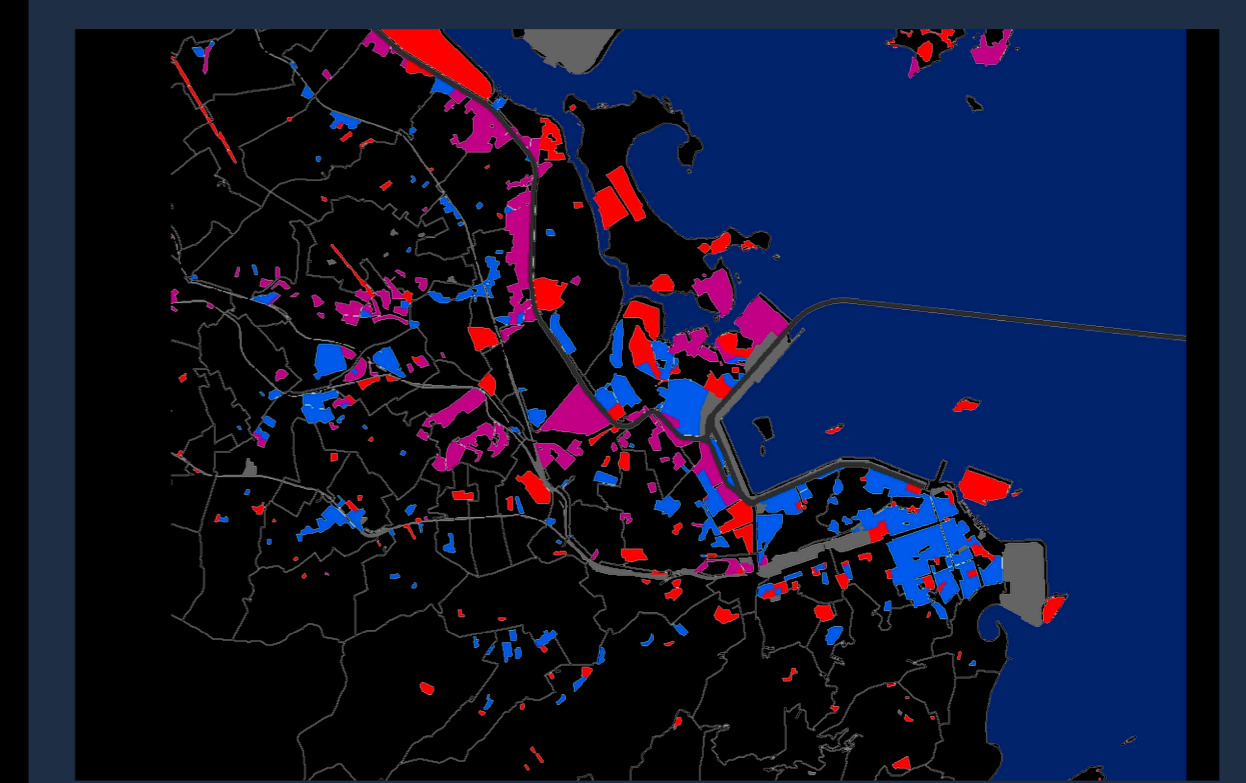


Since existing flooding zones and public spaces are overlapping its possible to increase their LAND POROSITY.



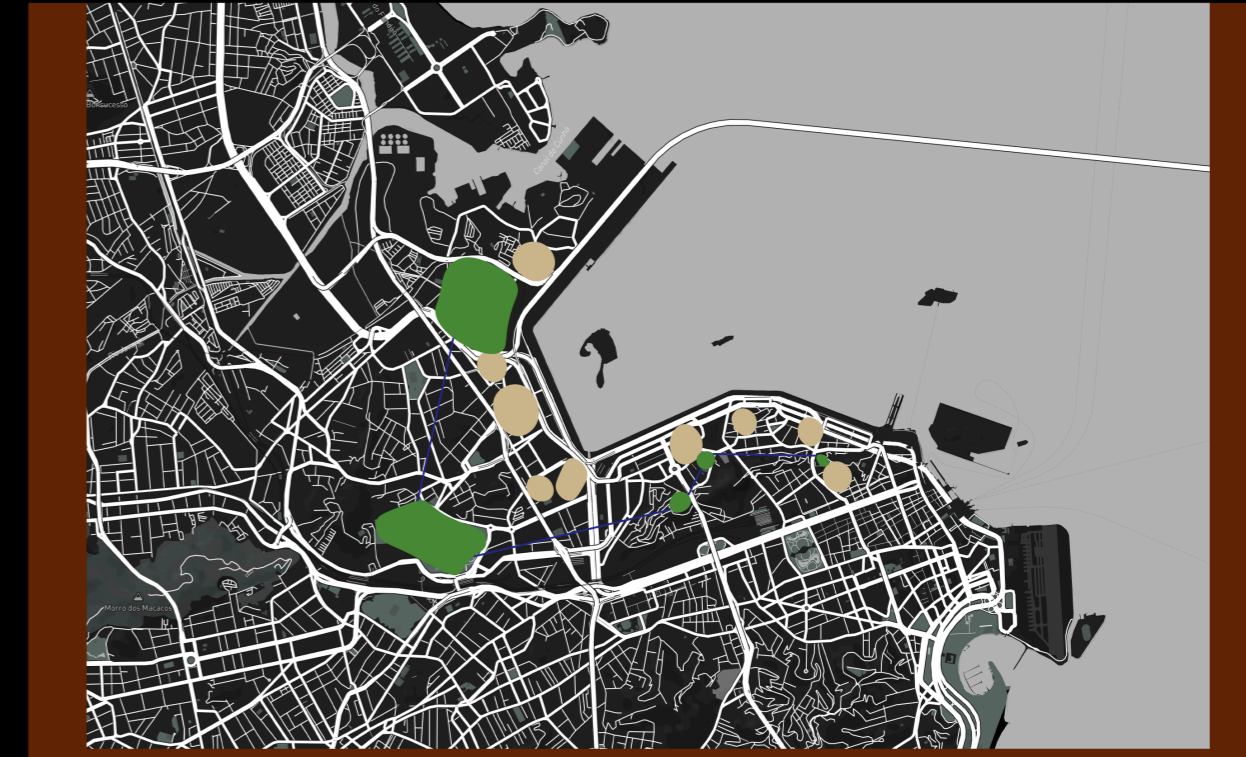
Connecting industrial, public amenities and major roads.

#GOVERNMENTAL



Land use

#URBAN



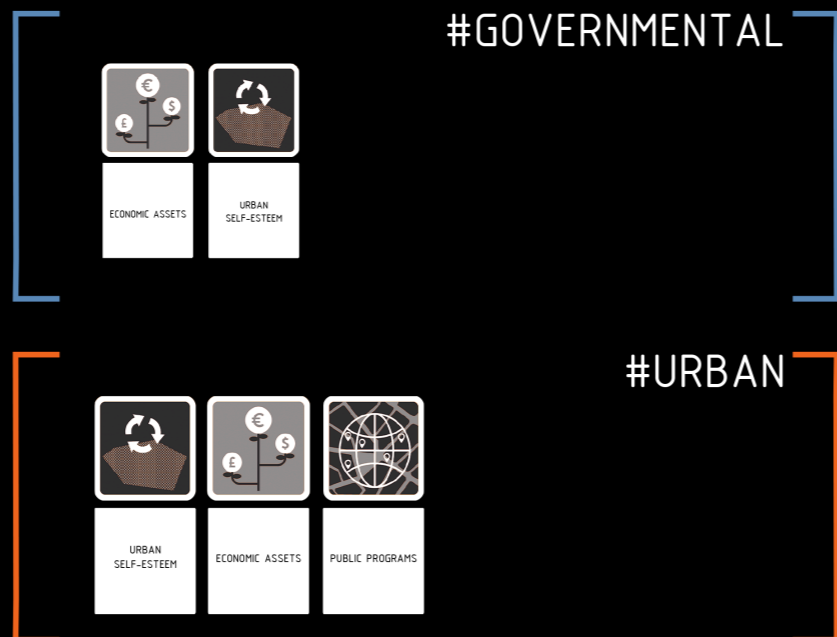
Possible areas for intervention

### IMPULSIONAR

ENHANCE



#GOVERNMENTAL

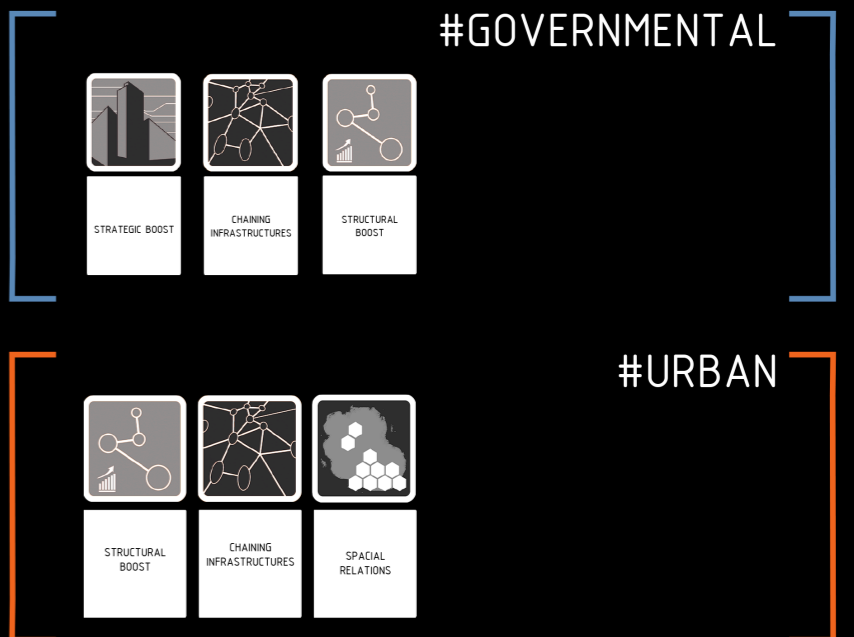


### POTENCIALIZAR

BOOST



#GOVERNMENTAL



### HIPÓTESE

HYPOTHESES

The reconfiguration and territorial expansion of the Port sectors of Rio de Janeiro will be only possible through the establishment of new **integrated networks**, with **new dynamics of infrastructure** that integrates urbanity and productivity for the emergence of **Super Hinterlands**.

### PERGUNTAS

QUESTIONS

**#ECONOMIC**

Rio has the opportunity to be create an Economy driven by Green Initiatives and the can become a model for **Green Economy**.

How Economy can drive Sustainable and Green Initiatives like **low carbon emissions** and **resource efficiency** in a city?

**Keywords:** Sustainable economy, low carbon emissions, interconnecting zones.

**#SUSTAINABLE**

Rio port being **artificial land** is vulnerable to sea level rise and flooding. How will the original land, artificial land and water form a **cohesive sustainable edge** along with utilizing the **derelict spaces** under the bridges and industrial areas?

- How can we create sustainable permeable catalytic edge with help of program distribution?  
**Keywords:** Degraded areas, Green corridor, Dry Spaces, Connecting greens, Industrial open spaces.
- In what ways can **technology** be integrated on site to establish **productive sustainable edge**?  
**Keywords:** Sustainable, Permeability, Program distribution.

**#GOVERNMENTAL**

How ports are utilised for urban growth and enhance the industrial area while reducing the carbon footprint?  
Does right and integrated policy framework helps in directive growth of the city?

**#URBAN**

Port area can be connected through network of **public spaces** which includes museums, restaurants, hotels, gas-stations. **Mobility** around the site of Rio de Janeiro port can be enhanced through dedicated lanes for bicycles, pedestrians and vehicular traffic.

- How **Urban growth** has an impact on overall development of port and can create economic opportunities?
- How **Urban Infrastructure** can be a stimulus for economic development?

### ESTRATÉGIAS

STRATEGIES

